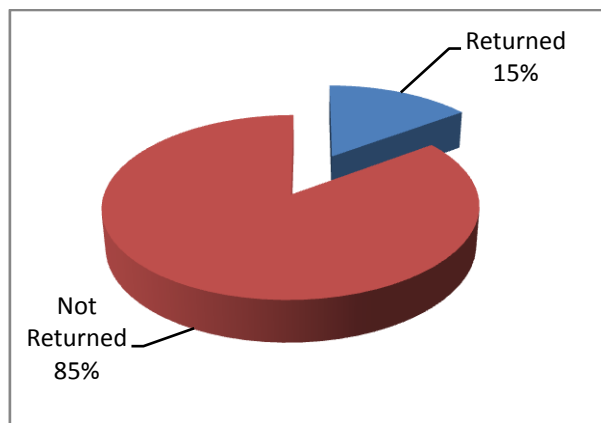


The Alveston Ward Liberal Democrat councillors have conducted a survey on Trinity Mead in response to a number of Trinity Mead residents reporting several concerns regarding the car parking arrangements on Trinity Mead.

The survey forms were delivered to households on Trinity Mead during the week beginning 24<sup>th</sup> July and also advertised on the Trinity Mead residents website and the Liberal Democrats website.

The forms were collected from households on 31<sup>st</sup> July by councillors and several more were delivered by residents to an advertised collection address on Trinity Mead.

There were 450 forms issued and 67 were returned.



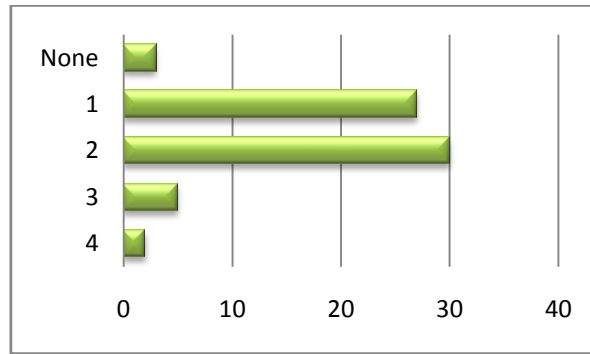
The 'base' of each question is the number of households which responded to that question.

Where freeform comments have been provided against particular questions, an analysis of the frequency of like for like comments has been included as a number rather than as a percentage.

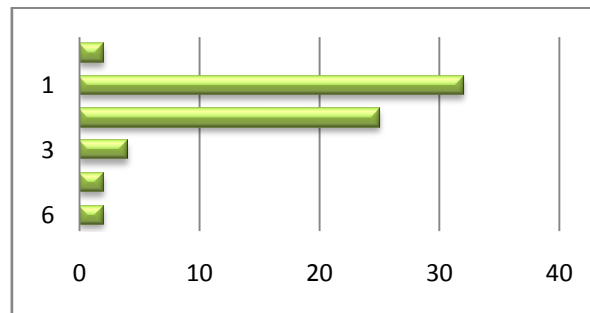
## Street Return Analysis

Addison Drive	2	Buchan Close	3	Marlowe Road	1
Amis Way	18	Burns Close	1	Milton Road	5
Austin Road	1	Carroll Close	1	Orwell Close	1
Barrie Close	3	Chesterton Drive	1	Scott Close	1
Bennett Way	2	Congreve Way	3	Worsdworth Avenue	8
Betjeman Road	2	Dickens Close	2	Not Given	5
Browning Close	2	Longfellow Road	5		

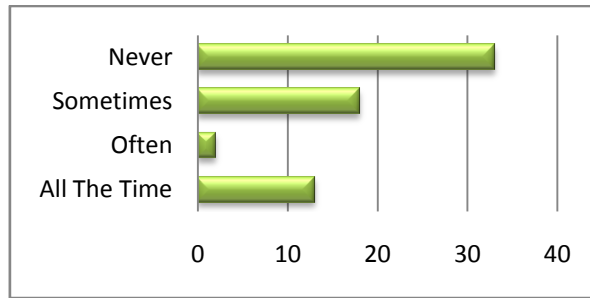
**Q1. How many vehicles do you have in your household ? - Base 67**



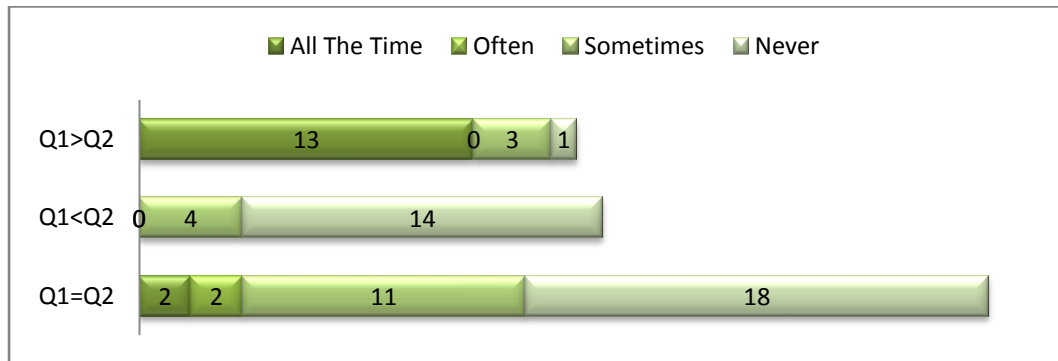
**Q2. How many designated parking spaces do you have ? - Base 67**



**Q3. How often do you park on the road or pavement ? – Base 66**



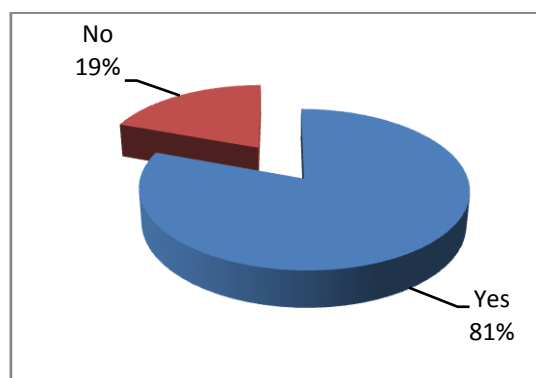
**Relationship between Q3 and the number of cars (Q1) and the number of designated parking spaces (Q2)**



**Why do you park on the road/pavement ?**

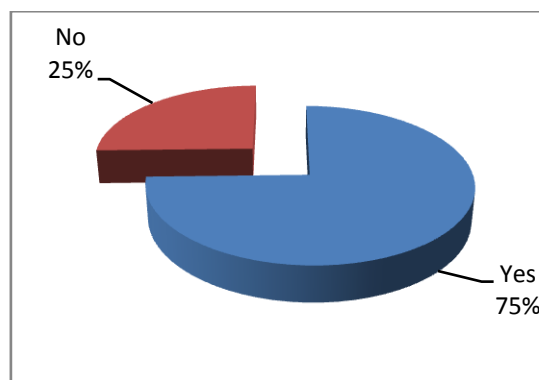
8	No where else to park
3	Designated place not easily accessible
3	Block each other in otherwise
9	Unload shopping etc
2	To stop others parking in front of their house, eg Budgens shoppers and suppliers
3	Visitors
1	Skip on drive
1	Designated parking at the rear so I park at the front for ease of getting the children in and out
1	To save moving cars off the drive
1	Cannot get children in and out when parking on property

**Q4. Are you ever inconvenienced, as a driver using the road or as a pedestrian, by other people parking on the road/pavement ? – Base 67**



**If Yes then why ? (these are joined with comments on Q5 below)**

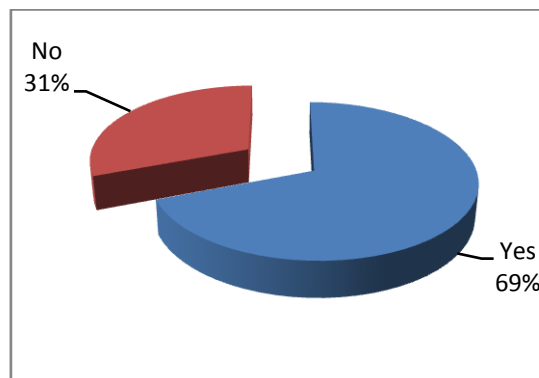
**Q5. Has irresponsible parking affected you directly ? – Base 67**



**If Yes please indicate how ? (joined with Q4 comments)**

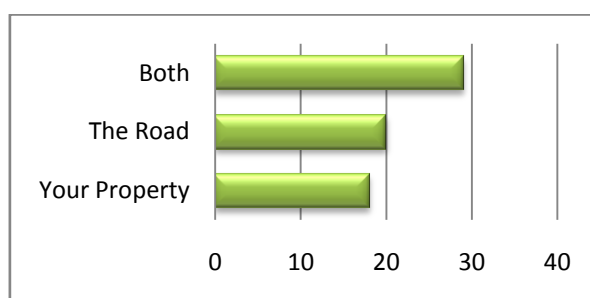
32	<b>Parking on corners/ bends forcing you onto the other side of the road and making it difficult to exit junctions with obscured vision, particularly ends of Amis Way, Milton Road, around Budgens, Wordsworth – accidents waiting to happen</b>
6	<b>Difficult to reverse car out of drive with cars parked opposite</b>
12	<b>Pedestrians and pushchair, mobility scooters etc cannot get by cars parked on pavement resulting in having to use the road in dangerous places, particularly by Budgens and Amis Way</b>
6	<b>Too many cars parked on either side of narrow and winding roads</b>
4	<b>Parking on the road outside Budgens</b>
7	<b>Park on the road rather than their allocated spaces, particularly flat owners</b>
5	<b>Cars parked outside houses which are nothing to do with the residents of those houses</b>
1	<b>Couldn't get to front door because of cars parked on pavement</b>
6	<b>Inconsiderate parking blocking entrances for other residents</b>
2	<b>Had to reverse back and go another way since space between parked cars was too narrow</b>
2	<b>Hopeless on bin collection days with the bin lorry and cars parked</b>
3	<b>Commercial vehicle parking makes it worse</b>
5	<b>Vehicles parked in such a way which restricts access to property</b>
1	<b>Early morning deliveries/collections mean residents have to move their cars</b>
2	<b>People don't seem to know the Highway Code and don't give way to oncoming traffic</b>
1	<b>Others park in my designated parking space</b>
5	<b>People drive too fast</b>
2	<b>Insufficient designated parking for the number who live and visit</b>
1	<b>There has been some vandalism in designated parking spaces</b>
1	<b>Long term visitors not using designated parking when there is space available</b>
1	<b>Garages too small</b>
4	<b>Blame the planners</b>
4	<b>Service and emergency vehicles, Buses , ambulances, fire engines etc have difficulty getting through</b>

**Q6. Is there a parking problem near your property ? – Base 65**



**If Yes then in which location and have you any suggestions as to how it could be resolved ? (these are joined with comments on Q8 below)**

**Q7. Do your visitors tend to park on – Base 67**



**Q8. In general If you have any ideas on resolving any parking issues on Trinity Mead (joined with Q6 comments)**

20	Double yellow lines on corners of road junctions, particularly round Budgens, Amis Way, Wordsworth, Longfellow, Milton
1	Don't want yellow lines since it would encourage even more people to park down the side roads.
1	Fine offenders
2	Convert square roundabout near Austin Road/Congreve Way to a car park
4	Leaflet houses with some sort of parking courtesy code and park in their designated parking where they have them
1	Change grass verges into tarmac for parking
1	Create additional parking bays
1	Ban parking on the road
1	Only allow parking on one side of narrow roads
3	Police enforcement of illegal parking
4	Get the roads adopted and the council/police to do enforcement
3	Parking permits
7	Encourage residents to use their designated parking
2	Too late – bad planning allowed
3	Traffic calming measures particularly on Wordsworth
1	CCTV by Budgens
3	Reduce the speed limit to 20mph within Trinity Mead
1	Slow the traffic down
1	Stop people parking on the green spaces
1	Ban parking on Wordsworth
1	Put notices on cars badly parked etc